

Weekly Climate Summary: 9/29/2024-10/5/2024

I. Climate in the News:

While the prevalence of tropical cyclones in the Atlantic Basin and the Gulf of Mexico tends to peak in September, Hurricane season can still make its presence known until the tail end of meteorological fall (November 30). A stark reminder of this is Hurricane Milton just northwest of the Yucatan Peninsula. As of this writing, Hurricane Milton has maximum 1-minute sustained winds of 175 mph, with a minimum central pressure of 911 mb. The storm underwent explosive intensification, increasing its peak wind speed by 90 mph in 24 hours, a feat only two hurricanes in recorded history have accomplished in the Atlantic. The current forecast keeps Texas well away from the storm to the point that virtually no impacts are expected as it tracks to the south. This being said, we must keep our neighbors in Mexico and Florida in mind as the brute strength of Milton looks to take aim at them. The storm is expected to weaken some as it moves toward Florida as environmental conditions are less favorable to support such a strong storm, yet it will still likely retain major hurricane status (category 3 or greater) as it makes landfall.

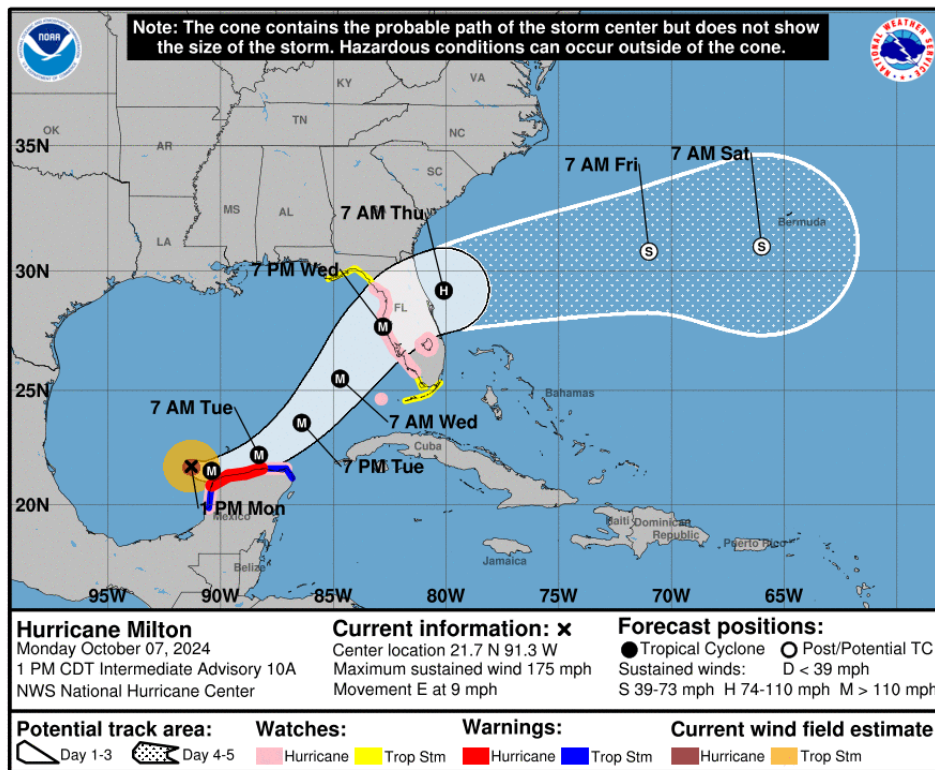
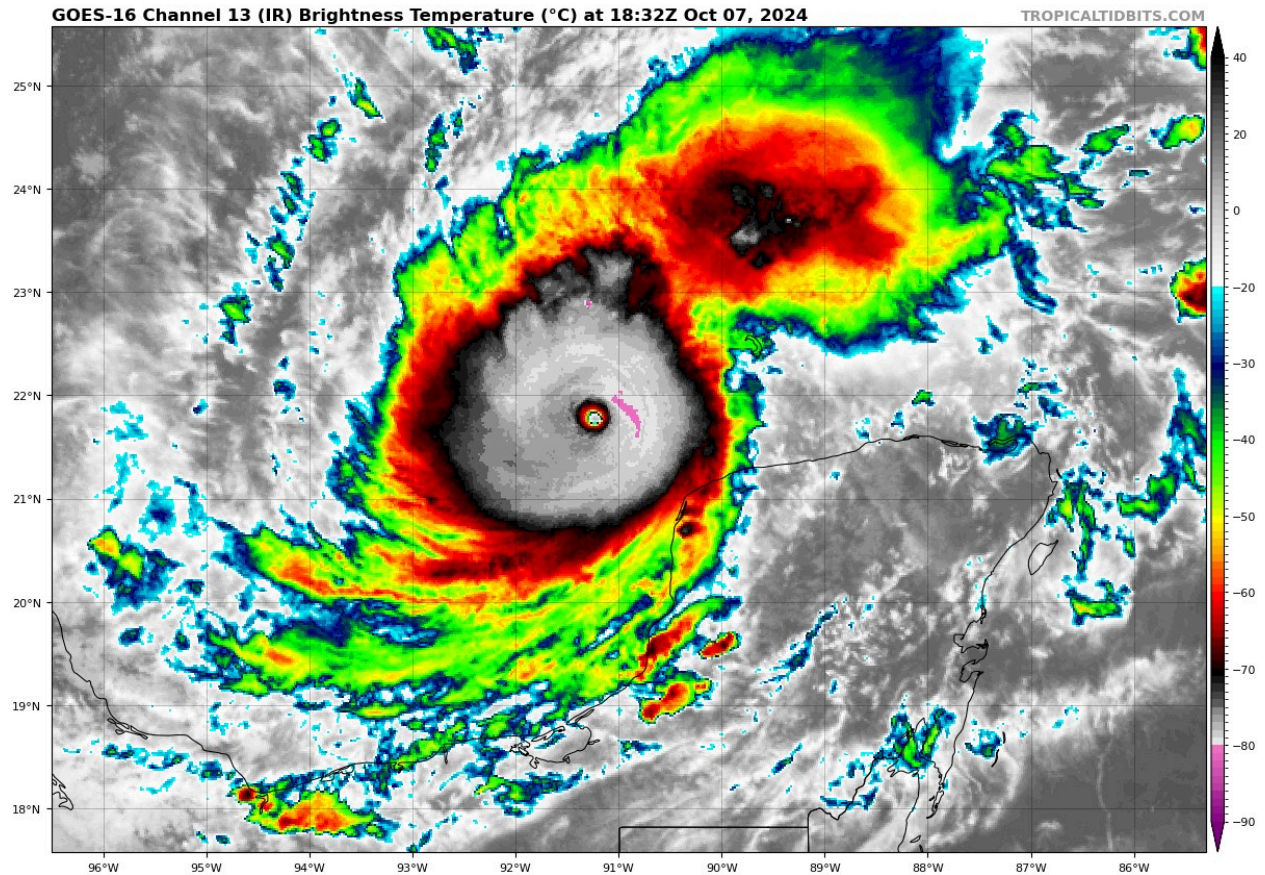


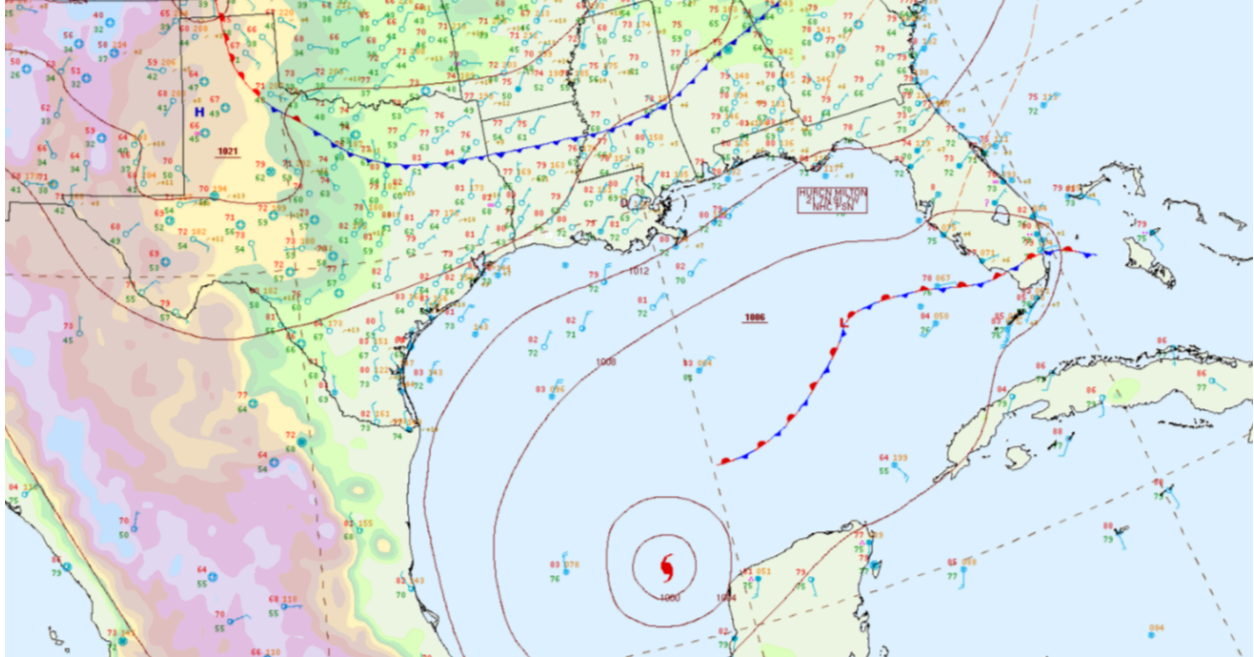
Image showing the forecast track of Milton by the National Hurricane Center. Deviations in the track are likely between now and the time when Hurricane Milton makes landfall, so folks anywhere along the western Florida coast should be on high alert with this storm.



Satellite imagery of Hurricane Milton at 1:32 pm CDT on October 7, 2024. This image shows an extremely well organized storm with a small eye. The small, clear eye and highly symmetrical nature of the storm is indicative of high intensity.

II. Weather Synopsis:

For Texas, this week took a vacation as far as interesting weather goes. Two words: hot and dry, and that essentially sums up the entire week for the state. Turning our attention to Milton, tropical cyclones located where Milton is can pose a threat to Texas as they tend to meander to the northwest. At this point of hurricane season, storms in the Gulf of Mexico typically exhibit more of an eastern or northeastern track due to the presence of cold fronts and other larger-scale weather features that typically guide storms in that direction. Milton is no different in this case, as a stalled frontal boundary in the Gulf is preventing a more northward trajectory.



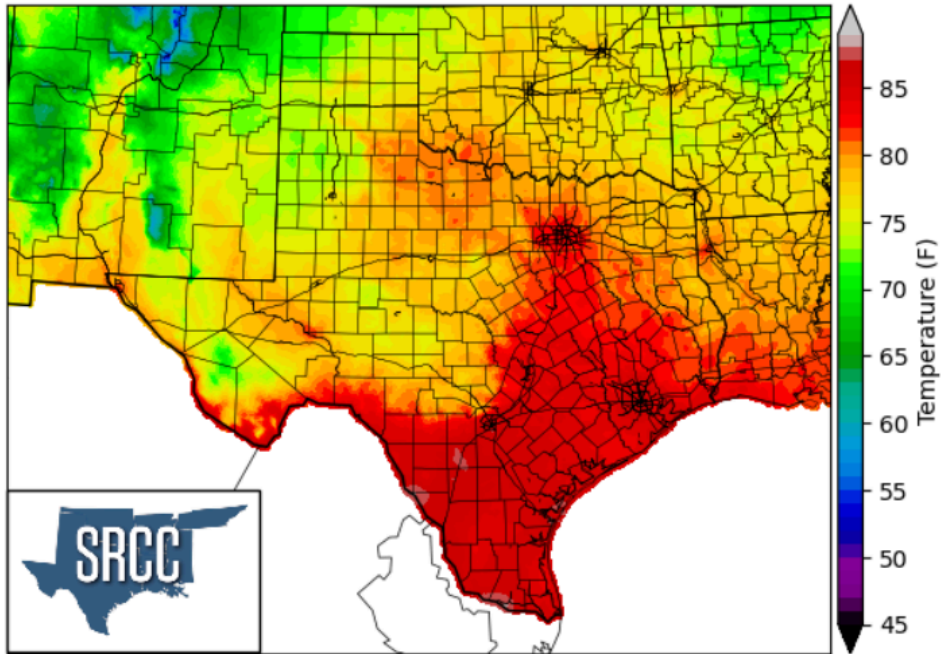
Map of the surface weather pattern plotted observations courtesy of the Weather Prediction Center. Milton can be seen at center right. The stationary frontal boundary to the northeast is likely a player in the eventual storm motion.

III. Temperature:

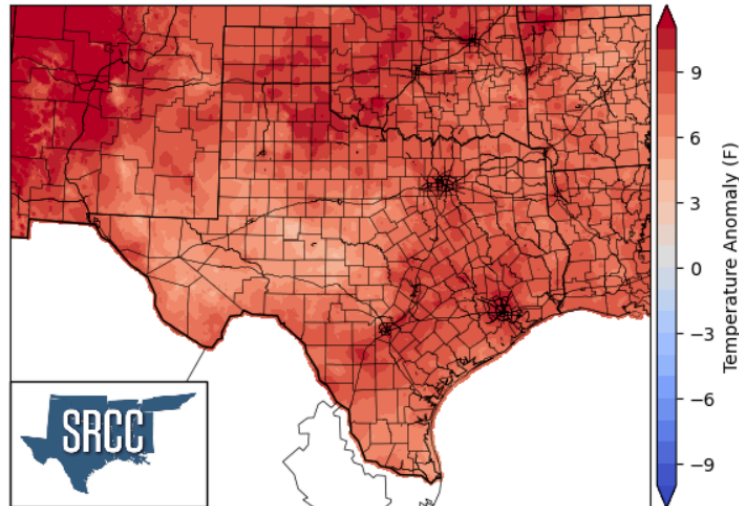
Bringing the discussion back to Texas specifically, we note a week that is not at all pumpkin spice weather. Temperatures across the entire state were more reminiscent of mid-September rather than early October. The absence of any significant cold fronts or appreciable rainfall statewide did little to subdue the sharp temperature rise during the day. With most days being mirror images of one another for the week, presenting cool mornings and hot afternoons, statewide average temperatures for the week were generally between 4 and 8°F above normal.

- The Muleshoe 19S airport in Bailey County and the Bravo Co-op site in Hartley County saw the lowest weekly average at **67.0°F**
- The average temperature for Texas stations was **76.2°F** (- 0.8°F from last week)
- The McAllen Co-op site in Hidalgo County saw the highest weekly average at **84.0°F**

Average Temperature (F) September 29- October 5, 2024



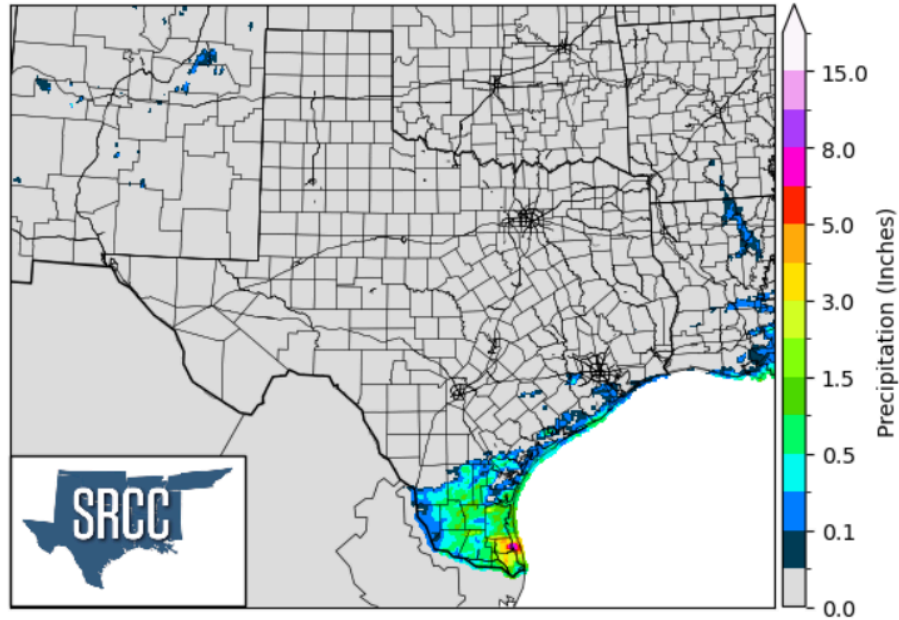
Mean Temperature Anomaly (F) September 29- October 5, 2024 vs 1991-2020 Normals



IV. Precipitation

In stark contrast to the week prior, precipitation was essentially non-existent across the State of Texas. The lack of precipitation can be traced to the dry air across the state and no mechanisms by which to trigger precipitation. This is highly uncharacteristic for the month of October as frequent cold fronts tend to bring periods of rain, so much so that for a sizable portion of the state, October is typically the second rainiest month of the year.

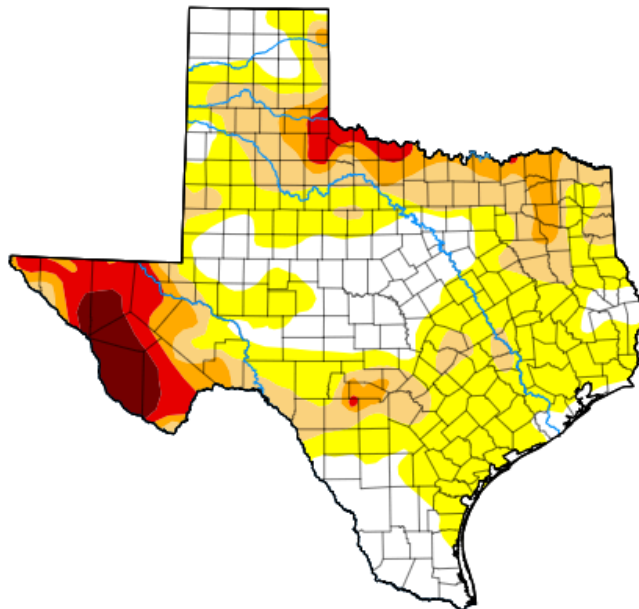
Accumulated Precipitation (Inches) September 29- October 5, 2024



The U.S Drought Monitor saw areas of drought expand as the week of September 29-October 5th featured next to no precipitation for much of Texas.

Texas

[Home](#) / [Texas](#)



Map released: Thurs. October 3, 2024

Data valid: October 1, 2024 at 8 a.m. EDT

Intensity

- None
- D0 (Abnormally Dry)
- D1 (Moderate Drought)
- D2 (Severe Drought)
- D3 (Extreme Drought)
- D4 (Exceptional Drought)
- No Data

Authors

United States and Puerto Rico Author(s):

[Richard Tinker](#), NOAA/NWS/NCEP/CPC

Pacific Islands and Virgin Islands Author(s):

[Denise Gutzmer](#), National Drought Mitigation Center

V. Statewide extremes

- The hottest recorded temperature of the week was **104°F** at the Faith Ranch Airport in Dimmit County on September 30, 2024
- The coldest recorded temperature of the week was **43°F** seen at two Muleshoe sites in Bailey County on October 6, 2024.
- The most precipitation recorded in the week of September 29- October 5, 2024, was **3.55"** at the Harlingen Co-op site in Cameron County
- The rainiest day at any site across the state of Texas was October 5, 2024, where **1.77"** of rain fell at the Harlingen Rio Grande Valley International Airport in Cameron County